

HVAC DESIGN SOURCEBOOK

SECOND EDITION

**Mc
Graw
Hill**

W. Larsen Angel, P.E., LEED AP

HVAC Design Sourcebook

About the Author

W. Larsen Angel, P.E., LEED AP, is a principal in the MEP consulting engineering firm Green Building Energy Engineers. He has worked in the MEP consulting engineering industry for more than 30 years. Mr. Angel has contributed to the development of design standards and continues to find new ways to streamline the HVAC system design process.

HVAC Design Sourcebook

W. Larsen Angel, P.E., LEED AP

Second Edition



New York Chicago San Francisco
Athens London Madrid
Mexico City Milan New Delhi
Singapore Sydney Toronto

Copyright © 2020 by McGraw Hill. All rights reserved. Except as permitted under the United States Copyright Act of 1976, no part of this publication may be reproduced or distributed in any form or by any means, or stored in a database or retrieval system, without the prior written permission of the publisher.

ISBN: 978-1-26-045725-4

MHID: 1-26-045725-7

The material in this eBook also appears in the print version of this title: ISBN: 978-1-26-045724-7, MHID: 1-26-045724-9.

eBook conversion by codeMantra

Version 1.0

All trademarks are trademarks of their respective owners. Rather than put a trademark symbol after every occurrence of a trademarked name, we use names in an editorial fashion only, and to the benefit of the trademark owner, with no intention of infringement of the trademark. Where such designations appear in this book, they have been printed with initial caps.

McGraw-Hill Education eBooks are available at special quantity discounts to use as premiums and sales promotions or for use in corporate training programs. To contact a representative, please visit the Contact Us page at www.mhprofessional.com.

Information contained in this work has been obtained by McGraw Hill from sources believed to be reliable. However, neither McGraw Hill nor its authors guarantee the accuracy or completeness of any information published herein, and neither McGraw Hill nor its authors shall be responsible for any errors, omissions, or damages arising out of use of this information. This work is published with the understanding that McGraw Hill and its authors are supplying information but are not attempting to render engineering or other professional services. If such services are required, the assistance of an appropriate professional should be sought.

TERMS OF USE

This is a copyrighted work and McGraw-Hill Education and its licensors reserve all rights in and to the work. Use of this work is subject to these terms. Except as permitted under the Copyright Act of 1976 and the right to store and retrieve one copy of the work, you may not decompile, disassemble, reverse engineer, reproduce, modify, create derivative works based upon, transmit, distribute, disseminate, sell, publish or sublicense the work or any part of it without McGraw-Hill Education's prior consent. You may use the work for your own noncommercial and personal use; any other use of the work is strictly prohibited. Your right to use the work may be terminated if you fail to comply with these terms.

THE WORK IS PROVIDED "AS IS." MCGRAW-HILL EDUCATION AND ITS LICENSORS MAKE NO GUARANTEES OR WARRANTIES AS TO THE ACCURACY, ADEQUACY OR COMPLETENESS OF OR RESULTS TO BE OBTAINED FROM USING THE WORK, INCLUDING ANY INFORMATION THAT CAN BE ACCESSED THROUGH THE WORK VIA HYPERLINK OR OTHERWISE, AND EXPRESSLY DISCLAIM ANY WARRANTY, EXPRESS OR IMPLIED, INCLUDING BUT NOT LIMITED TO IMPLIED WARRANTIES OF MERCHANTABILITY OR FITNESS FOR A PARTICULAR PURPOSE. McGraw-Hill Education and its licensors do not warrant or guarantee that the functions contained in the work will meet your requirements or that its operation will be uninterrupted or error free. Neither McGraw-Hill Education nor its licensors shall be liable to you or anyone else for any inaccuracy, error or omission, regardless of cause, in the work or for any damages resulting therefrom. McGraw-Hill Education has no responsibility for the content of any information accessed through the work. Under no circumstances shall McGraw-Hill Education and/or its licensors be liable for any indirect, incidental, special, punitive, consequential or similar damages that result from the use of or inability to use the work, even if any of them has been advised of the possibility of such damages. This limitation of liability shall apply to any claim or cause whatsoever whether such claim or cause arises in contract, tort or otherwise.

To Lisa, my dear wife, who is my one and only true love.
Thank you for the insights and help you provided for this book,
and for life in general. You are truly my inspiration.

"... with God all things are possible."—Matthew 19:26

This page intentionally left blank

Contents

Preface	xv
Acknowledgments	xvii
1 What Is HVAC?	1
2 The Design Process	5
HVAC Load Calculations	5
Terms	6
Geographical Location	7
Building Materials	8
Unconditioned Spaces	10
Conditioned Spaces	10
Zones	12
Air Systems	12
Central Plant	13
Codes and Standards	13
Codes	13
Standards	14
System Selection	14
Design Team Members	15
Design Submissions	16
Schematic Design	16
Design Development	18
Construction Documents	31
Questions	35
Endnotes	36
3 Piping, Valves, and Specialties	37
Pipe, Fittings, and Joints	38
Steel Pipe	38
Steel Pipe Fittings and Joints	39
Specification for Steel Pipe, Fittings, and Joints	41
Copper Tube	42
Copper Fittings and Joints	43
Specification for Copper Tube, Fittings, and Joints	44
Valves	44
Functions	45
Types	46
Operating Conditions	62
Materials	66
Ends	66

Specialties	66
Meters	67
Pressure Gauges	69
Test Plugs	70
Strainers	70
Suction Diffusers	71
Flexible Pipe Connectors	72
Air Vents and Drains	73
Questions	76
Endnotes	76
4 Central Plant	79
Heating Equipment	79
Boilers	79
Heat Exchangers	94
Cooling Equipment	103
Chillers	103
Cooling Towers	120
Auxiliary Hydronic Equipment	130
Air Separator	130
Chemical Treatment	133
Expansion Tank	135
Makeup Water Assembly	138
Pumps	140
4-Pipe and 2-Pipe Heating and Cooling Plants	144
Design Considerations	146
Water-Source Heat Pump Plant	149
Design Considerations	152
Equipment Room Design	152
Questions	155
Endnotes	156
5 Air Systems	161
Air System Types	162
HVAC Air Systems	163
Ventilation Air Systems	171
Air Pressurization Calculations	182
Air System Equipment	184
Physical Characteristics	184
Connections	190
Design Considerations	197
Questions	202
Endnotes	203
6 Piping and Ductwork Distribution Systems	207
Equations and Conversion Factors	207

Piping Systems	208
General Design Guidelines	208
Hydronic System Design Fundamentals	219
Low-Pressure Steam System Design Fundamentals	223
Insulation	233
Duct Systems	235
Construction	235
General Design Guidelines	241
Air Devices	250
Coordination with Other Disciplines	255
Questions	256
Endnotes	256
7 Terminal Equipment	261
Heating-Only Equipment	263
Finned-Tube Radiators	263
Electric Radiators	265
Duct Heating Coils	265
Unit Heaters	268
Cabinet Unit Heaters	271
Heating and Cooling Equipment	274
Fan-Coil Units	274
Ductless Split-System Units	281
Variable Air Volume Terminal Units	286
Similarities of Single-Duct and Fan-Powered VAV Terminal Units	286
Single-Duct VAV Terminal Units	291
Fan-Powered VAV Terminal Units	294
Comparison	299
Coordination with Other Disciplines	300
Questions	300
Endnotes	301
8 Variable Refrigerant Flow Systems	303
Introduction	303
System Configurations	303
Application of Heat Recovery Systems	303
Capacities	304
Outdoor Air Ventilation	304
System Efficiency	304
Annual Maintenance Cost	304
Questions	305
9 Humidity Control	307
Introduction	307
Psychrometrics	307

X Contents

Constant Air Volume Systems	311
Variable Air Volume Reheat Systems	311
Energy Code Requirement	312
Example	312
Other Systems	313
Questions	313
Endnotes	314
10 Noise and Vibration Control	315
Noise Control	315
Sound Power and Sound Pressure	315
Tonal Qualities of Sound	316
Balanced and Unbalanced Sound	316
A-Weighted Sound Pressure Level	316
Outdoor Noise	317
Indoor Noise	318
Vibration Control	321
Equipment Hangers and Supports	322
Flexible Pipe and Duct Connectors	323
Additional Resources	323
Questions	324
Endnotes	324
11 Automatic Temperature Controls	325
Components	326
Input	326
Output	333
Connections	344
Systems	345
Hot Water Cabinet Unit Heater	345
Parallel Fan-Powered Variable Air Volume Terminal Unit ...	346
VAV Air Handling Unit	348
Building Automation Systems	353
BAS Architecture	353
Communication	355
Interoperability	355
Questions	356
Endnotes	357
12 Sustainability	359
Introduction	359
LEED	359
HVAC System Design	359
Energy Efficiency	359
Commissioning	360
Indoor Environmental Quality	361
Refrigerant Management	361
Questions	362

13	Construction Drawings	363
	Legend and Abbreviations	363
	Terminology	363
	Notes on Drawings	366
	General Notes	366
	Drawing Notes	368
	Key Notes	369
	Linework	369
	Computer-Aided Design Considerations	370
	CAD Standard	371
	Model Files	371
	Sheet Files	371
	Other Conventions	372
	Demolition Plans	372
	New Work Plans	374
	Section Drawings	376
	Large-Scale Plans	377
	Details	377
	Schedules	384
	Diagrams	384
	Flow Diagrams	387
	Riser Diagrams	388
	ATC Diagrams	390
	Questions	392
	Endnotes	393
14	Example Design Project and Design Guide	395
	Introduction	395
	Proposal Phase	395
	Scope of HVAC System Design	396
	New Building Project—Questions to Ask at the Start of an HVAC Design Project	396
	Renovation Project—Questions to Ask at the Start of an HVAC Renovation Project	401
	Schematic Design Phase—Example of How to Choose an Appropriate HVAC System Type	403
	Schematic Design Narrative	404
	HVAC Load Calculations	406
	Design Development Phase	407
	Construction Documents Phase	410
	Final Equipment Selections	411
	Final Coordination with the Owner and Design Team Members	411
	HVAC System Design	412
	Equipment Schedules	414
	Details	415
	ATC Diagrams, Sequences of Operation, and DDC Point Lists	416

15	Central Plant Optimization	417
	Introduction	417
	Cataloged Energy Efficiencies of Central Plant Equipment	417
	Energy Metering	418
	Predictive Energy Efficiency	418
	Input to the Optimization Program	418
	Output from the Optimization Program	419
	Waterside Economizer	420
	Conclusion	421
	Questions	421
16	Construction Administration	423
	Introduction	423
	Bidding Phase	423
	Pre-Bid Meeting	423
	Requests for Information	423
	Addenda	424
	Bid Opening	424
	References	424
	Bonds	424
	Insurance	425
	Contract Award	425
	Construction Phase	426
	Team Members	426
	Schedule	427
	Schedule of Values	427
	Permits	428
	Submittals	428
	Submittal Review	428
	Construction Procedures	429
	Documentation	433
	Payment	435
	Project Closeout	436
	Questions	438
	Endnote	438
17	The Commissioning Process	439
	Introduction	439
	Pre-Design Phase	439
	Design Phase	440
	Construction Phase	440
	Submittal Review	441
	Issues Log	441
	Deficiency Resolution	441
	Installation and Start-Up Checklists	441
	Prefunctional Checklists	441
	Preliminary Control System Functional Testing	441

Testing, Adjusting, and Balancing (TAB) Execution Plan	442
Testing, Adjusting, and Balancing (TAB) Report	442
Functional Testing	442
Occupancy and Operations Phase	443
Questions	443
Endnote	443
Index	445

This page intentionally left blank

Preface

Are you searching for a practical handbook that will assist you in the process of designing heating, ventilating, and air-conditioning (HVAC) systems for commercial buildings? The *HVAC Design Sourcebook* is the tool you need to quickly become a valuable member of your design team.

The typical approach to training junior employees in the process of designing HVAC systems is to have them try to learn the skills they need to work as effective members of a design team from the senior HVAC engineers they are working under. Unfortunately, the knowledge the senior engineers are expected to impart has taken them years to develop and, without a practical training resource, the process of teaching junior HVAC system designers the essentials of HVAC system design becomes time-consuming, ineffective, and costly.

The *HVAC Design Sourcebook* fills the void in the industry for a practical resource to assist in the process of training junior HVAC system designers in the basics of HVAC system design. Essential design concepts are clearly explained and illustrated with photographs of actual HVAC systems installations and graphical conventions used in the preparation of construction drawings. Codes and standards are referenced frequently to emphasize the need for HVAC systems to be designed in accordance with the requirements of the regulating authorities. Other topics such as the overall design process, HVAC systems and equipment, piping and ductwork distribution systems, noise and vibration control, and automatic temperature controls are presented in a manner that can be understood and applied by the junior HVAC system designer. The ultimate goal of preparing complete, well-coordinated HVAC system construction drawings is consistently in view throughout the book.

New for this second edition of the *HVAC Design Sourcebook* is a discussion of variable refrigerant flow (VRF) systems, strategies to control indoor air relative humidity, essential sustainable design practices, central plant optimization, construction administration, and the commissioning process. Finally, the concepts presented in the *HVAC Design Sourcebook* are applied to an example HVAC system design project.

The *HVAC Design Sourcebook* is the essential resource for individuals who are considering or pursuing a career in the field of HVAC system design.

For further online materials relating to this book, please go to www.mhprofessional.com/HVACdesign

W. Larsen Angel, P.E., LEED AP

This page intentionally left blank

Acknowledgments

Thanks to my two sons, Larsen Jr. and Christian, for their encouragement. Special thanks to Larsen Jr. for his help with this book.

This page intentionally left blank

HVAC Design Sourcebook

This page intentionally left blank

CHAPTER 1

What Is HVAC?

The term *HVAC* stands for heating, ventilating, and air-conditioning. It describes the field that is concerned with heating, ventilating, and air-conditioning the indoor environment in order to meet the comfort, health, and safety needs of building occupants and the environmental needs of indoor equipment or processes. Although HVAC systems are required for airplanes, ships, automobiles, and other special applications, this book will focus on HVAC systems for commercial buildings.

Heating and ventilating systems for buildings have been in existence for centuries. Fireplaces and windows, the earliest forms of indoor heating and ventilating, remained the primary means of heating and ventilating buildings into the late nineteenth century. It was in the nineteenth century that engineers began to use steam heating systems, which consisted of coal-fired boilers, pipes, and radiators, to heat buildings. Steam heating systems are still widely used today, although natural gas and fuel oil have replaced coal as the primary fuel source.

In the Middle Ages, people made the connection between “bad air” in overcrowded or smoky rooms and disease. In the eighteenth and nineteenth centuries, scientists and physicians began to study the sources of indoor air contaminants and the effects these contaminants had on human health. As a result, in 1895 the American Society of Heating and Ventilating Engineers (ASHVE) adopted a minimum ventilation rate of 30 cubic feet per minute (cfm) of outdoor air per occupant as a ventilation standard for public buildings. It was understood at the time that this ventilation rate was sufficient to dilute the indoor air contaminants to a level that was acceptable for human occupancy. Outdoor air ventilation rates that are required to produce acceptable indoor air quality for various occupancies continue to be studied by the American Society of Heating, Refrigerating, and Air-Conditioning Engineers (ASHRAE), the successor of ASHVE. *ANSI/ASHRAE Standard 62.1-2019—Ventilation for Acceptable Indoor Air Quality* is devoted to the subject of indoor air quality. The guidelines of this standard have largely been incorporated into the various mechanical codes applied to building construction, such as the *International Mechanical Code (IMC)*, published by the International Code Council, Inc. (ICC).

Mechanical cooling (air-conditioning) systems are a relatively recent development. The first central building air-conditioning system, designed for the Missouri State Building, was demonstrated to the public during the 1904 World’s Fair held in St. Louis. Since that time, a great deal of research has been performed and a wide variety of air-conditioning equipment has been developed to meet the diverse air-conditioning needs of modern buildings.

In addition to heating, ventilating, and air-conditioning the indoor environment to meet the comfort and health needs of the building occupants, modern HVAC systems

are frequently required to protect the safety of the occupants or, in industrial applications, to provide a clean environment for the processes performed within the building. For example, smoke control systems may be required to minimize the spread of smoke within a building during a fire. Also, HVAC systems may be required to maintain air pressure relationships between adjacent spaces where hazardous materials are handled or infectious patients are being treated and to signal the building operator or activate emergency ventilation systems if these pressure relationships are not maintained. HVAC systems may also be required to provide a high level of air filtration in order to maintain a clean indoor environment for such processes as semiconductor fabrication.

With the understanding of what HVAC systems are and what they are expected to accomplish, it is the role of the HVAC system designer to design HVAC systems to meet project needs. In order to do this, the HVAC system designer must first understand the project requirements. The designer must then use this information, along with a knowledge of the potential HVAC system options, to design the HVAC systems (in accordance with the applicable codes) that are appropriate for the project. Factors governing the HVAC system selection and the ultimate HVAC system design include:

- HVAC system types that are available to meet the project needs
- Building owner's preferences or standards
- Building owner's budget
- Installed cost, operating cost, and maintenance cost of the potential HVAC system options
- Space limitations, both indoors and outdoors, and coordination with other building elements such as the architectural, structural, and electrical systems

After all factors have been considered and the final HVAC system configuration has been developed, the HVAC system designer must present the HVAC system design in a clear and concise way through the use of construction documents. Construction documents are the drawings and specifications for a project that are used by the installing contractor to construct the HVAC systems. The construction documents are also used by the building maintenance personnel as a resource in the ongoing operations and maintenance of the HVAC systems.

In this book, we will discuss the HVAC system design process from concept to completion of the construction documents (Chap. 2); piping, valves, and specialties, which are an integral part of HVAC systems (Chap. 3); the central plant, which is where fuel sources are converted to heating and cooling energy (Chap. 4); air systems, which circulate air within the building (Chap. 5); piping and ductwork distribution systems, which are used to distribute the heating and cooling energy from the central plant to the air systems and terminal equipment and eventually to the spaces within the building (Chap. 6); terminal equipment, which is often used in the distribution of the heating and cooling energy to the spaces within the building (Chap. 7); variable refrigerant flow systems, in which multiple, direct expansion indoor fan-coil units are connected to a single, outdoor heat pump or energy recovery unit (Chap. 8); humidity control, which is crucial for cooling operation in warm, humid climates (Chap. 9); noise and vibration control, which is a critical component of a successful HVAC system design (Chap. 10);

automatic temperature controls, without which HVAC systems cannot function properly (Chap. 11); sustainability, which is the process of designing HVAC systems with the goal of conserving natural resources and improving the overall indoor environment (Chap. 12); preparation of construction drawings, including some important drafting and computer-aided design concepts (Chap. 13); an example design project, including example construction drawings (Chap. 14); central plant optimization, which is employed to reduce energy use and cost (Chap. 15); construction administration, which is the process of ensuring that the HVAC systems construction corresponds to the HVAC systems design (Chap. 16); and the commissioning process, which is the process of ensuring that the HVAC systems function in the manner in which they were intended (Chap. 17).

This page intentionally left blank

CHAPTER 2

The Design Process

HVAC Load Calculations

HVAC load calculations are the foundation upon which the HVAC system design is built. Therefore, it is imperative that the HVAC system designer accurately calculate the peak heating and cooling loads for the project in order to properly design the HVAC systems. The most accurate method for calculating the HVAC loads of a commercial building is the heat balance method. This method is described in detail in Chap. 18 of the 2017 *ASHRAE Handbook—Fundamentals*. The HVAC system designer must have a good understanding of this method in order to understand how a building's construction materials, geometry, orientation, and internal functions affect the HVAC loads within the different areas of the building.

Because the process of calculating HVAC loads is quite involved, commercially available HVAC load calculation software is used almost exclusively for commercial projects. This section provides an overview of the major considerations associated with HVAC load calculations for commercial buildings. The details of how building information is entered into the HVAC load calculation program will vary from one program to another. The HVAC system designer should consult the software user's manual for detailed instructions on how to set up the load calculations.

Buildings are affected by heating and cooling loads both external to and internal to the building. External loads include heat gains or losses from exterior walls (above and below grade), windows, roofs, skylights, doors, floors, partitions (walls, floors, and/or ceilings internal to a building that separate conditioned spaces from unconditioned spaces), and outdoor air leakage (referred to as infiltration). External loads vary with outdoor air temperature and relative humidity, the intensity and position of the sun, external shading, wind speed, and the temperature of the ground. External loads are also dependent upon the geographical location of the building. Internal loads include heat gains from people, lighting, and equipment. These loads also vary and depend upon the occupancy of the various spaces within the building and equipment usage.

In most situations, the goal of proper HVAC system design is to maintain a constant indoor air temperature year-round, regardless of the outdoor conditions or internal functions. In some cases, it is desirable to also maintain a constant indoor air relative humidity which adds complexity to the design due to the requirement to control an additional variable. Humidity control is discussed in Chap. 7.

In order to maintain a constant indoor air temperature, the HVAC systems serving a building must be sized to offset the heat that is lost from the various spaces within the building (when the heat losses exceed the heat gains) and offset the heat that is added to the various spaces within the building (when the heat gains exceed the heat losses).

Terms

Before we continue with the discussion of HVAC load calculations for commercial buildings, it is necessary to define some terms:

- **Space:** The smallest area defined in the HVAC load calculation usually consists of a single room.
- **Zone:** Typically a collection of spaces, all of which have similar HVAC loading characteristics. HVAC loading characteristics are defined as the manner in which the HVAC loads vary within a space. For example, three offices located on the south side of a building would normally have similar HVAC loading characteristics because the spaces have a similar use and the heat gains and losses through the exterior building components would vary similarly for all of the spaces. Therefore, these spaces would commonly be grouped into one HVAC zone. The space temperature of these three offices would be controlled by a single thermostat¹ located in one of the offices. However, single-space zones in a building are common where temperature control of that one space is critical. An example would be a conference room. It would not be desirable for the space temperature in a conference room to be controlled by a thermostat located in a nearby office. If that office was unoccupied, the thermostat would call for minimum cooling. However, if the conference room was fully occupied at the same time, it would require maximum cooling. In this case, the thermostat would not adequately satisfy the cooling requirement of the conference room because the conference room has different HVAC loading characteristics than the office. Another example of a single-space zone would be an office located in the corner of a building. Because this office would have two exterior walls with exposures that are at right angles to each other, its HVAC loading characteristics would be different from any other space on that floor.
- **Terminal Equipment:** The equipment that delivers the heating or cooling energy to the HVAC zones in response to the zone thermostats. An example of terminal equipment for a commercial building is a variable air volume (VAV) terminal unit. Multiple VAV terminal units are normally served by a single VAV air system (see air system description below). Each VAV terminal unit receives conditioned supply air from the air system, modulates the supply airflow, and may add heat to the supply airflow in response to the zone thermostat controlling the VAV terminal unit. Another example of terminal equipment for a commercial building is a finned-tube radiator that is sometimes used to provide radiant heat for zones having external loads.
- **Air System:** The HVAC equipment that conditions the air supplied to the HVAC zones. An air system also returns air from the HVAC zones and provides outdoor air ventilation when required. An air system may serve multiple zones (as in the case of the VAV terminal units described above) or it may serve only one zone. In the case of the single-zone air system, the zone thermostat controls the heating and cooling capacity of the air system, and there is no terminal equipment. An example of a single-zone air system that most people are familiar with is the fan-coil unit that provides heating and cooling for a home in response to the zone thermostat.

Air can be conditioned in an air system by heating, cooling, humidifying (adding moisture), or dehumidifying (removing moisture). The components of

an air system that are relevant to HVAC load calculations are the supply fan and return fan (if applicable), which circulate the air through the heating and/or cooling coils in the unit; the heating and/or cooling coils, which transfer the necessary heating and/or cooling energy that is required by the zones to the airstream; and the outdoor air ventilation, which is usually introduced at a mixing point upstream of the heating and cooling coils. The combination of return air and outdoor air is called mixed air.

Other components of an air system that are relevant to HVAC load calculations but are not as widely used include a humidifier, which is used to add moisture to the supply air; a reheat coil, which is used to reheat the supply air after it has been cooled (often used as a means to maintain the indoor air relative humidity of the zones at a maximum level); and an energy recovery coil, wheel, or plate heat exchanger, which is used to exchange energy from an exhaust airstream to the outdoor air airstream.

- **Central Plant:** Buildings require heating and cooling energy to offset the heat gains and heat losses and to condition the outdoor air ventilation for the building. The central plant refers to the equipment that generates the heating and cooling energy utilized by the building. This equipment can be either centralized or decentralized. In a centralized system the central plant equipment is remote from the air systems and terminal equipment. An example of a centralized system would be a central heating and cooling plant for a building where the plant is remote from the air systems and contains boilers that provide heating water or steam to the air system heating coils and chillers that provide chilled water to the air system cooling coils. Heating and cooling energy may also be supplied by the central plant to various types of heating and/or cooling terminal equipment in the building.

In a decentralized system, the central plant equipment is an integral part of each air system. An example of a decentralized system would be multiple rooftop units serving a building where each rooftop unit contains a gas-fired furnace that provides heating energy to the airstream through a heat exchanger and a complete refrigeration system that provides cooling energy to the airstream through a cooling coil. This type of unit is referred to as a self-contained unit because all of the necessary heating and cooling equipment is contained within one complete package. In this example of a decentralized system, each air system (rooftop unit) contains the central heating and cooling plant equipment.

Geographical Location

Now that the terms for calculating HVAC loads have been defined, we will discuss the process of setting up the HVAC load calculations, assuming the calculation will be performed with commercially available HVAC load calculation software. The first step in the process is to define the inputs to the program, starting with the building's geographical location. Once the location has been selected, the program will utilize that area's database of annual weather data (contained within the program) to simulate the outdoor conditions, which include air temperature and relative humidity, wind speed and direction, intensity and position of the sun, and ground temperature. The database contains weather data for 365 typical (not actual) 24-hour days, totaling 8,760 hours of weather data for that location.

Building Materials

Opaque Materials

All materials conduct heat to some degree. The conductance, or U-Value, of a material, expressed in terms of British thermal units per hour per square foot per Fahrenheit degree ($\text{Btu}/\text{h}\cdot\text{ft}^2\cdot^\circ\text{F}$), is a measure of how well the material conducts heat. The higher the U-Value, the better the material conducts heat and vice versa. For HVAC load calculations, the U-Value for each type of wall, roof, and partition needs to be calculated. This is done by examining the wall, roof, and partition sections in the architectural drawings for the building. The properties of common construction materials are listed in Chap. 26 of the 2017 *ASHRAE Handbook—Fundamentals* and are also included in the building materials database of some HVAC load calculation programs.

In order to calculate the U-Value for a wall, roof, or partition type, it is necessary to first sum the resistances of all of the components for each wall, roof, or partition that are shown on the architectural drawings. The resistance of a material is the inverse of the U-Value and is given in terms of hour square foot Fahrenheit degree per British thermal unit ($\text{h}\cdot\text{ft}^2\cdot^\circ\text{F}/\text{Btu}$). Most people are familiar with this term because it is used to describe the insulating value of fiberglass batt insulation (e.g., $3\frac{1}{2}$ in. of batt fiberglass insulation has an R-Value of 11, which is typically denoted as R-11). Once the total R-Value of the wall, roof, or partition has been determined, the reciprocal of this total R-Value will be the U-Value.

Figure 2-1 provides an example of how the U-Value is determined for a sample wall that consists of the following components (from inside to outside): gypsum wall board, batt insulation, vegetable board sheathing, air space, and face brick. The U-Value for this wall section is the reciprocal of the R-Value, or $0.066 \text{ Btu}/\text{h}\cdot\text{ft}^2\cdot^\circ\text{F}$.

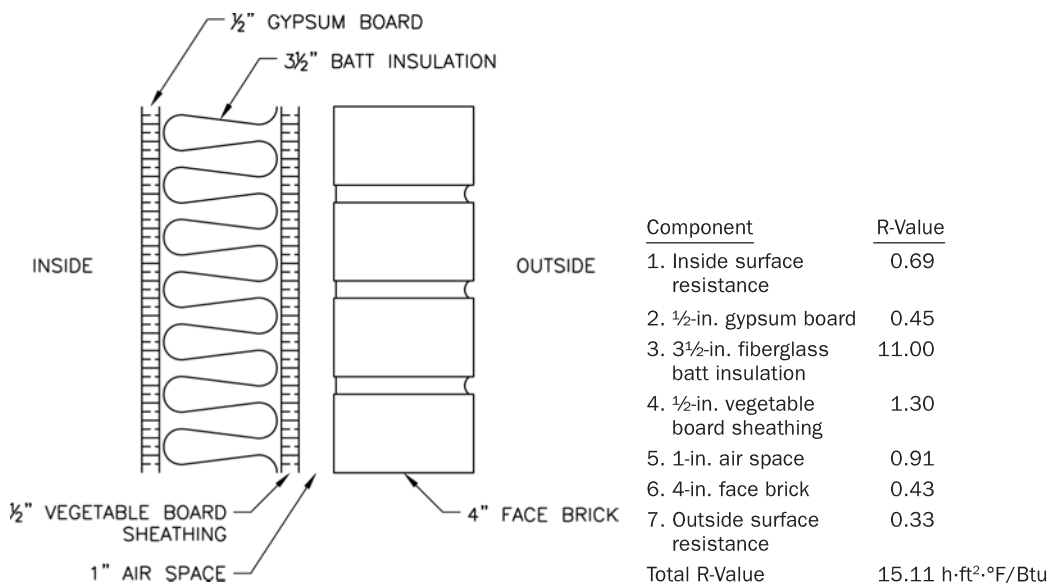


FIGURE 2-1 Typical architectural wall section.

In addition to the U-Value of the building envelope² materials, the color (light, medium, dark) and the weight (light, medium, heavy) of these materials have to be entered into the HVAC load calculation program because these factors affect the heat absorption and transmittance of these materials. For example, lighter-colored building materials exposed to the sun reflect more of the sun's radiant energy than darker-colored building materials do and, therefore, do not absorb as much of the sun's radiant energy. Second, lighter-weight building materials transmit the energy that they absorb from the sun to the interior of the building more quickly than heavier-weight building materials do. As a result, the peak cooling load of a lightweight building occurs shortly after the outdoor air temperature and intensity of the sun reach their peak; the peak cooling load of a heavyweight building will occur at a longer time interval after the outdoor conditions peak. Lightweight buildings will also cool off more quickly at night in the summer than heavyweight buildings will. In short, heavyweight buildings have more thermal mass than lightweight buildings and, as a result, transmit changes in the outdoor conditions more slowly to the indoor environment.

Fenestration

Fenestrations (windows, skylights, and doors) in a building also have a U-Value associated with them. However, in addition to defining the U-Value for the glazing (glass component only—no frame) contained within the windows, skylights, and doors, the solar heat gain coefficient (SHGC) needs to be determined as well. The SHGC is dimensionless and represents the percentage of the sun's radiant energy that is transferred through the glazing to the space. The SHGC coefficient decreases with added panes of glazing, tinting, and low-e (low-emittance) coatings. For example, SHGCs for various types of glazing are as follows:

<u>Glazing</u>	<u>SHGC</u>
1/8-in. clear, uncoated, single-pane	0.86
1/8-in. clear, uncoated, double-pane	0.76
1/8-in. gray, uncoated, double-pane	0.60
1/8-in. gray, low-e, double-pane	0.54

It is best to obtain the U-Value and SHGC for the various types of fenestration proposed for a project from the fenestration manufacturers' product data because these values vary considerably from one product to another and from one manufacturer to another. It is also necessary to determine if the window frames are thermally broken from the walls in which they installed, that is, if the frame is insulated from the wall. This can be determined by reviewing the details of the various window types in the architectural drawings for the building.

Buildings will sometimes incorporate elements that provide an external shading of the fenestration components, such as a roof overhang or shading above the top or along the sides of windows. The dimensions and positions relative to the fenestration components of all external shades must be entered into the description of each type of fenestration because they will have a significant impact on the percentage of the sun's radiant energy that is transmitted through the fenestration to the building's spaces. Internal shades such as drapes or venetian blinds may also be used, although it is recommended that they be omitted from the description of the fenestration types because their use will